

TAY TOWNSHIP



Committee of Adjustment Meeting, March 15, 2017

Presented By:

Steve Farquharson

Director of Planning and Development

Tony Huguenin

Secretary Treasurer



Committee of Adjustment Meeting March 15, 2017

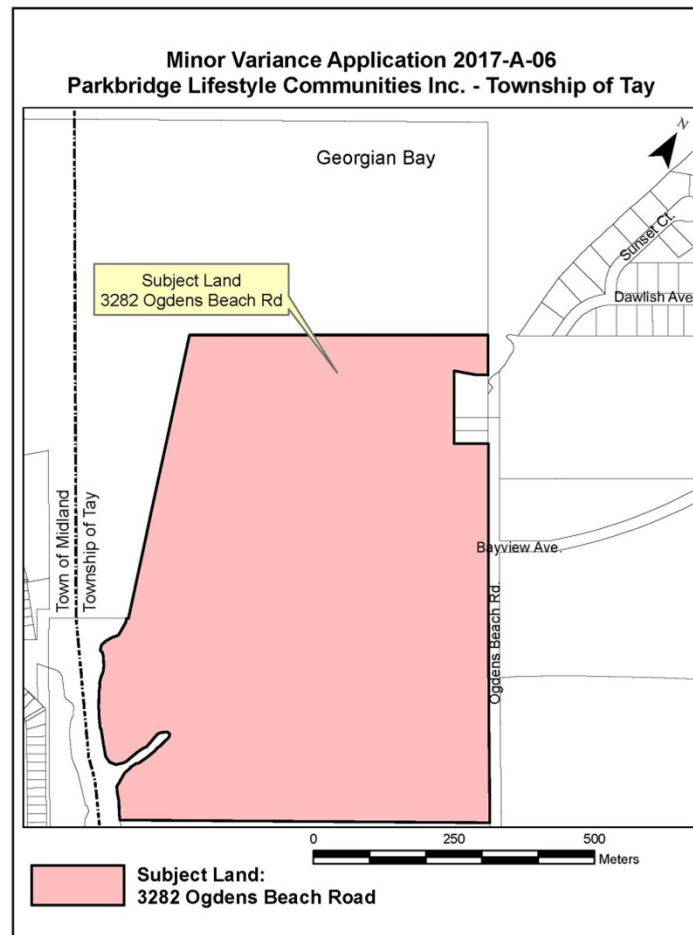
- 1. 2017-A- 06 (**Parkbridge Lifestyle Communities**)
- 2. 2017-A-07 (**John and Annette Van Adrichem**)

TAY TOWNSHIP

2017-A-06 (Parkbridge Lifestyle Communities)



Key maps



TAY TOWNSHIP



2017-A-06 (Parkbridge Lifestyle Communities)

Air Photo

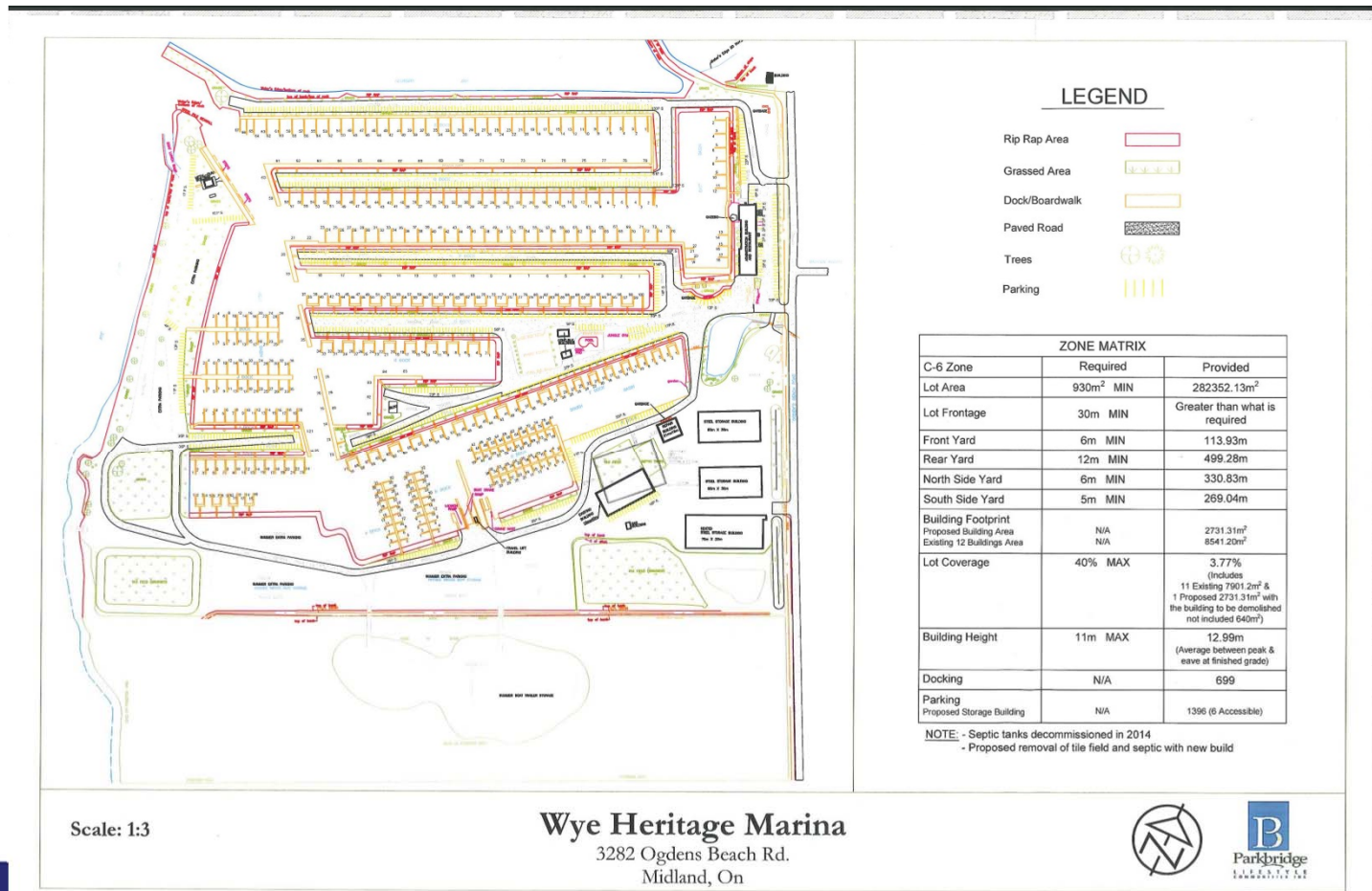


TAY TOWNSHIP

2017-A-06 (Parkbridge Lifestyle Communities)



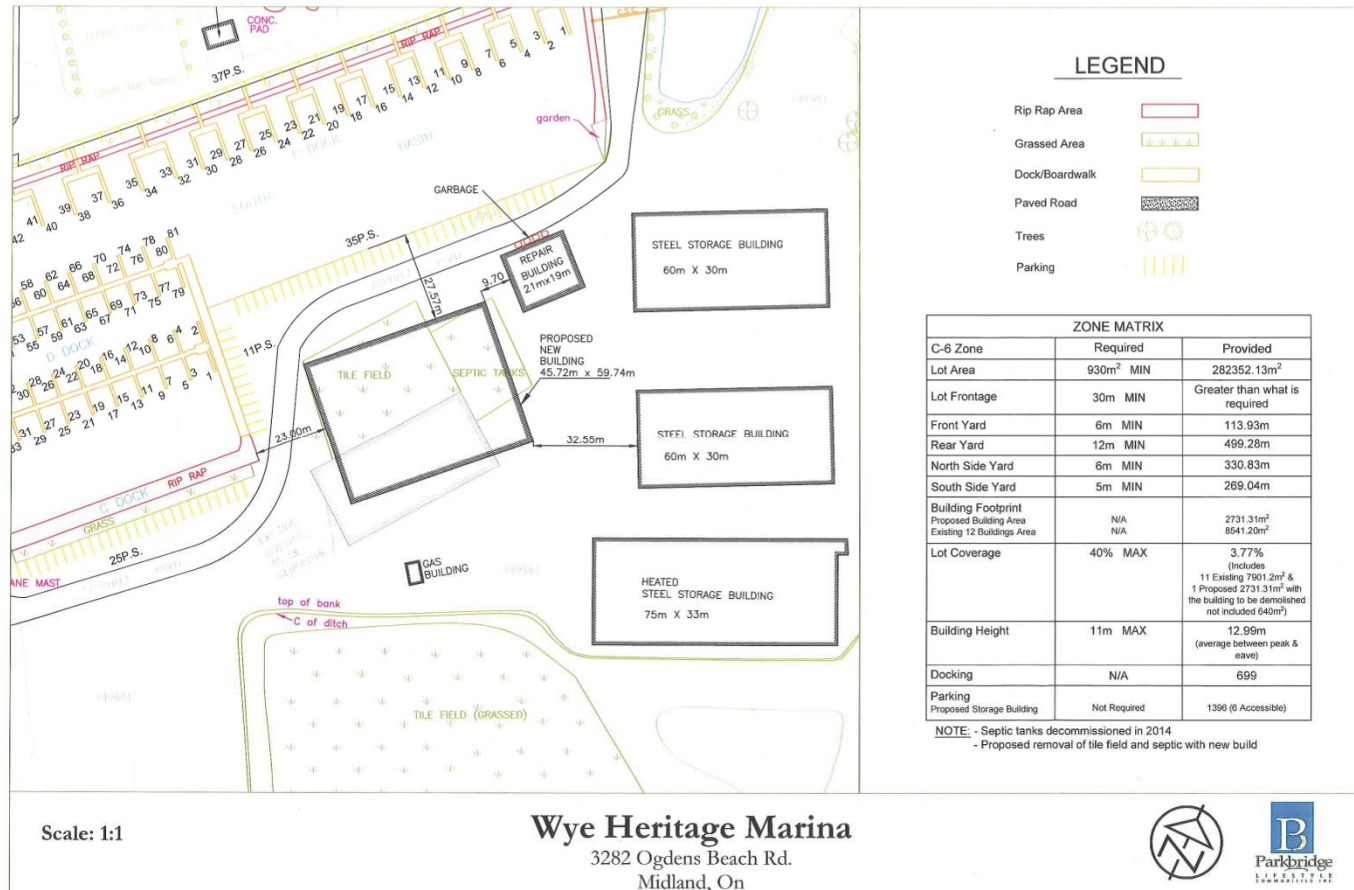
Overall Site Plan



TAY TOWNSHIP

2017-A-06 (Parkbridge Lifestyle Communities)

Site Plan



TAY TOWNSHIP

2017-A-06 (Parkbridge Lifestyle Communities)



Facing South-West



Facing South



TAY TOWNSHIP

2017-A-06 (Parkbridge Lifestyle Communities)



Facing East



Facing North-West



TAY TOWNSHIP

2017-A-06 (Parkbridge Lifestyle Communities)



Existing storage buildings

Facing north-west

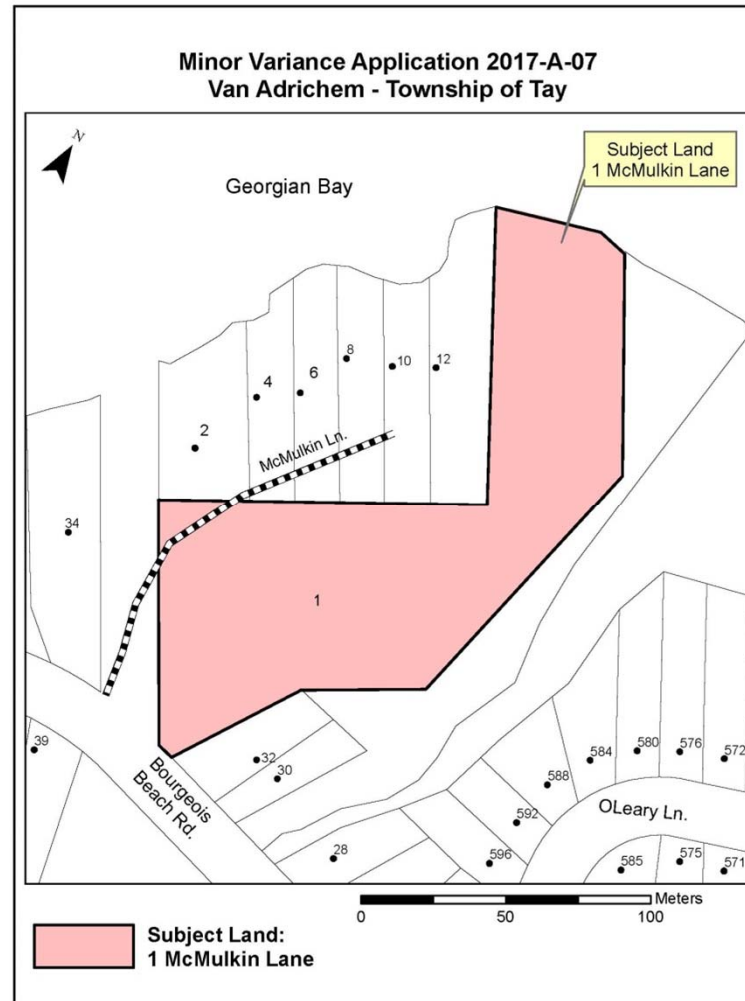


TAY TOWNSHIP

2017-A-07 (John and Annette Van Adrichem)



Key maps

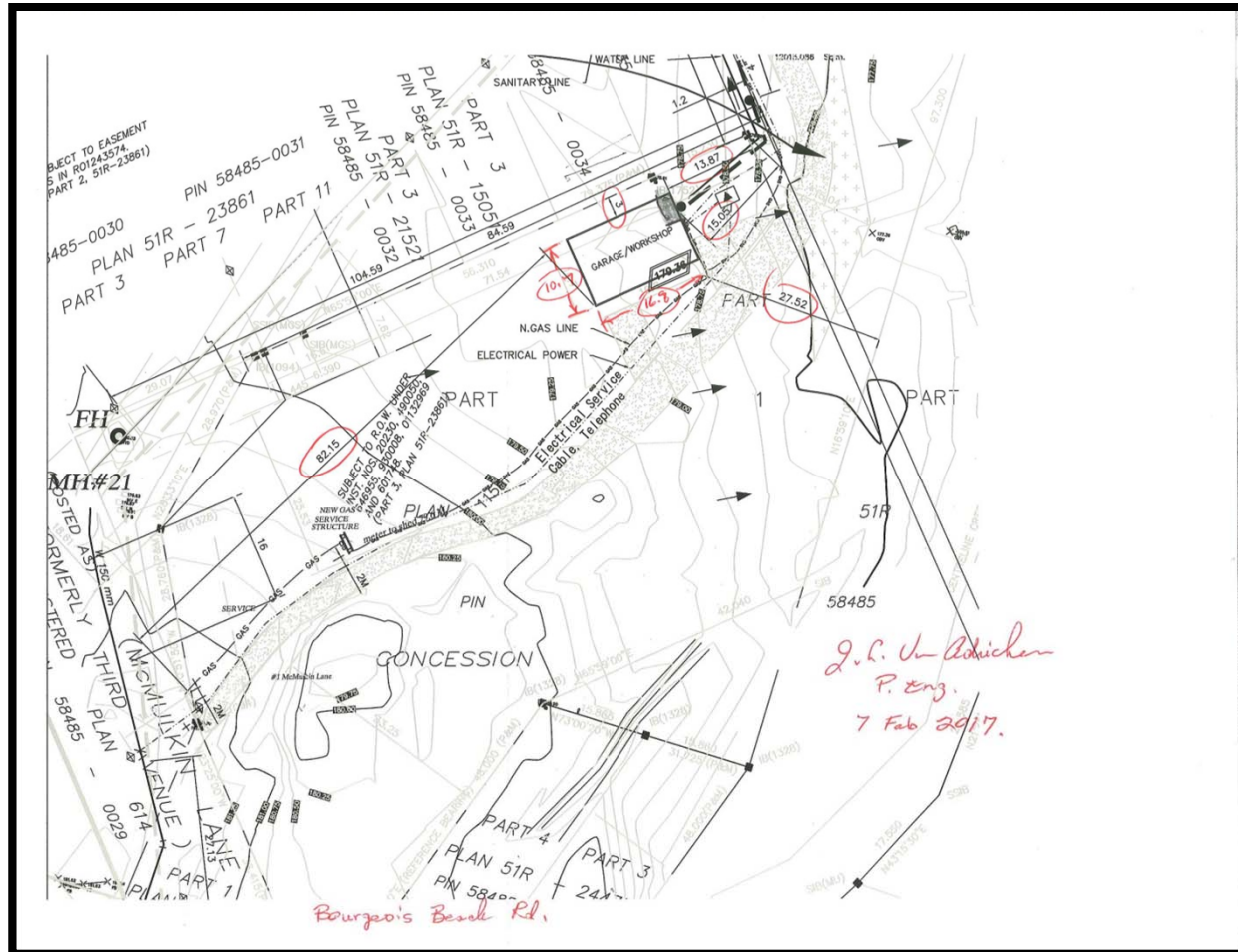


TAY TOWNSHIP

2017-A-07 (John and Annette Van Adrichem)



Site Plan



TAY TOWNSHIP

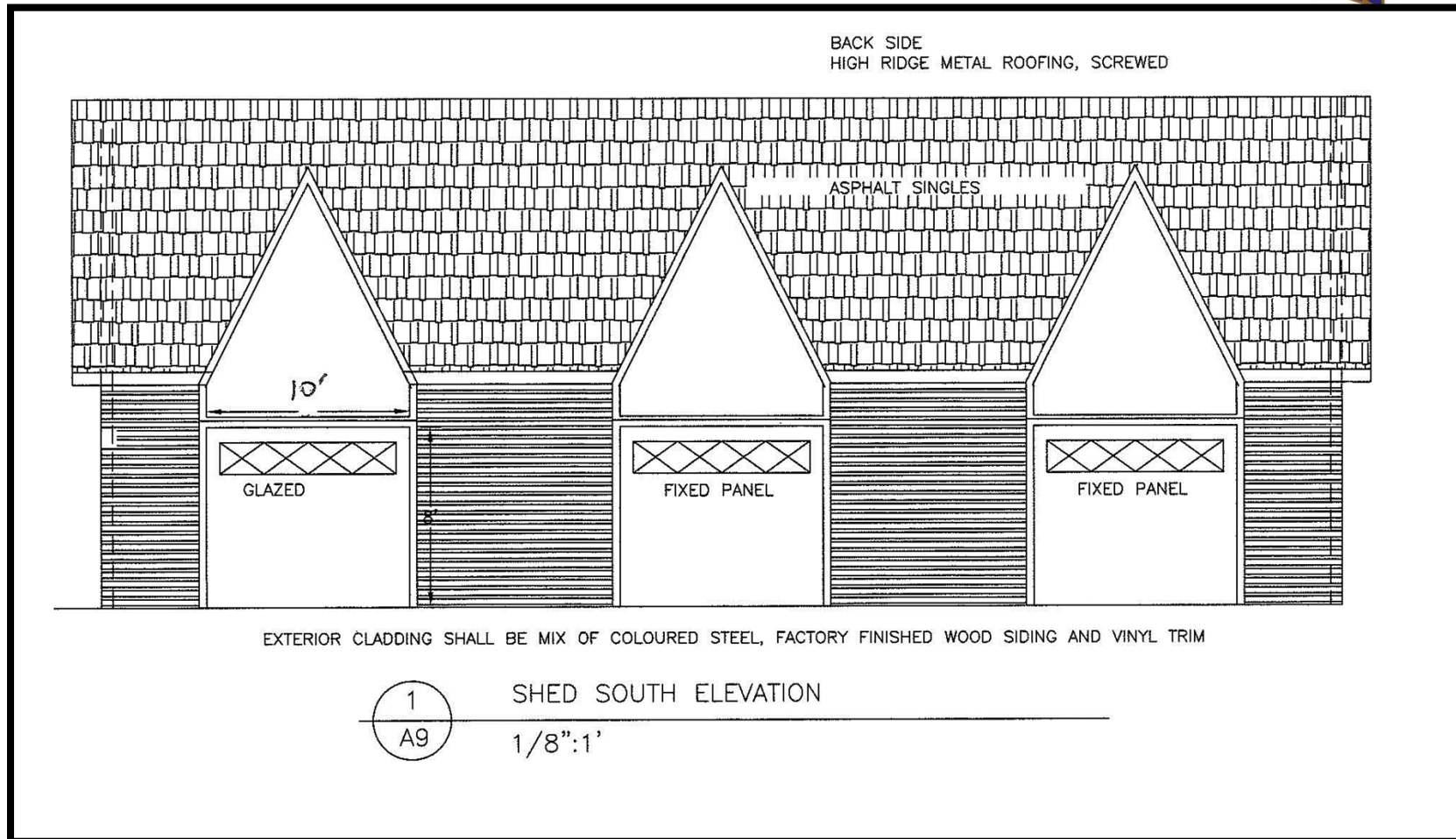
2017-A-07 (John and Annette Van Adrichem)

Air Photo

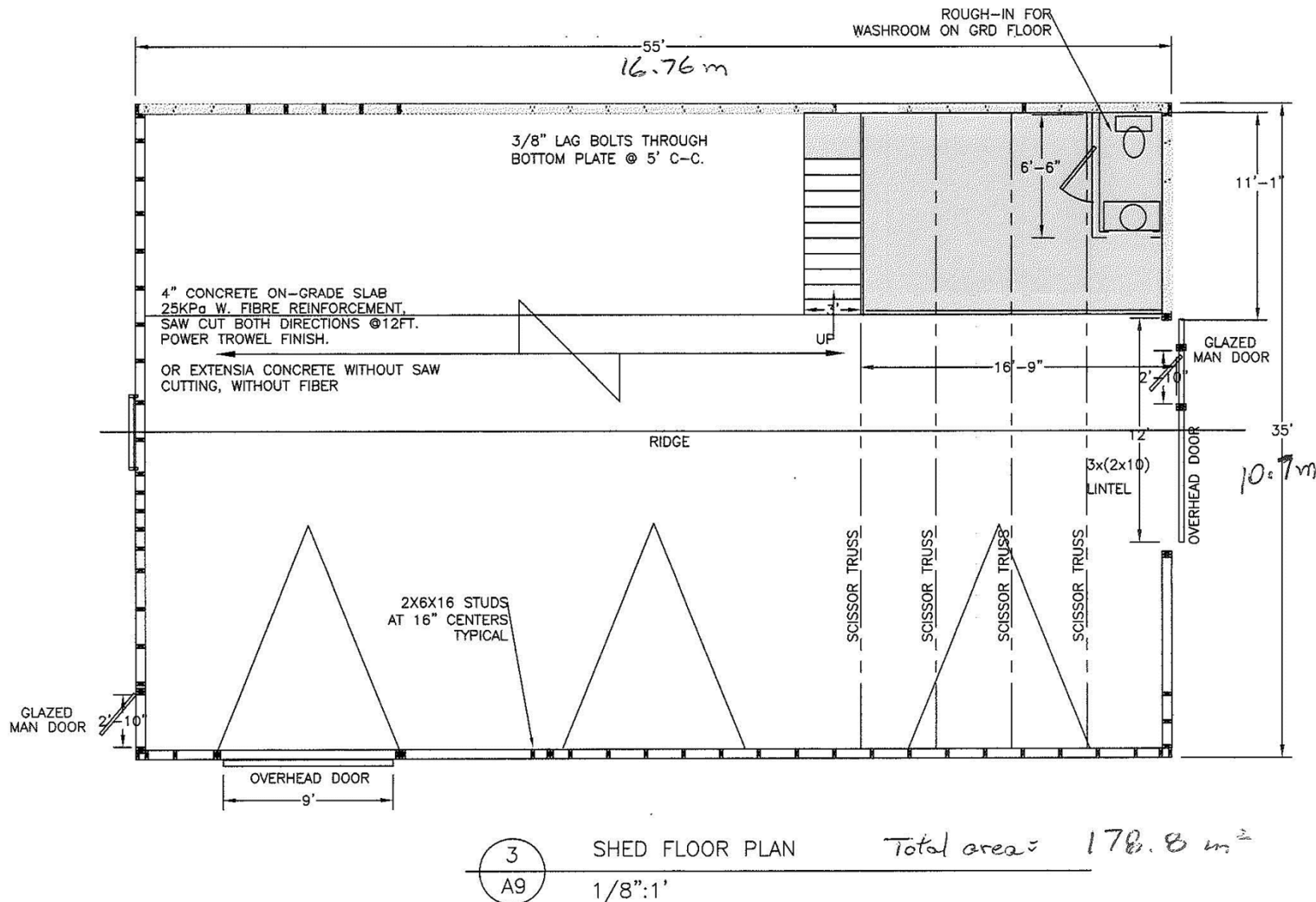


TAY TOWNSHIP

2017-A-07 (John and Annette Van Adrichem)

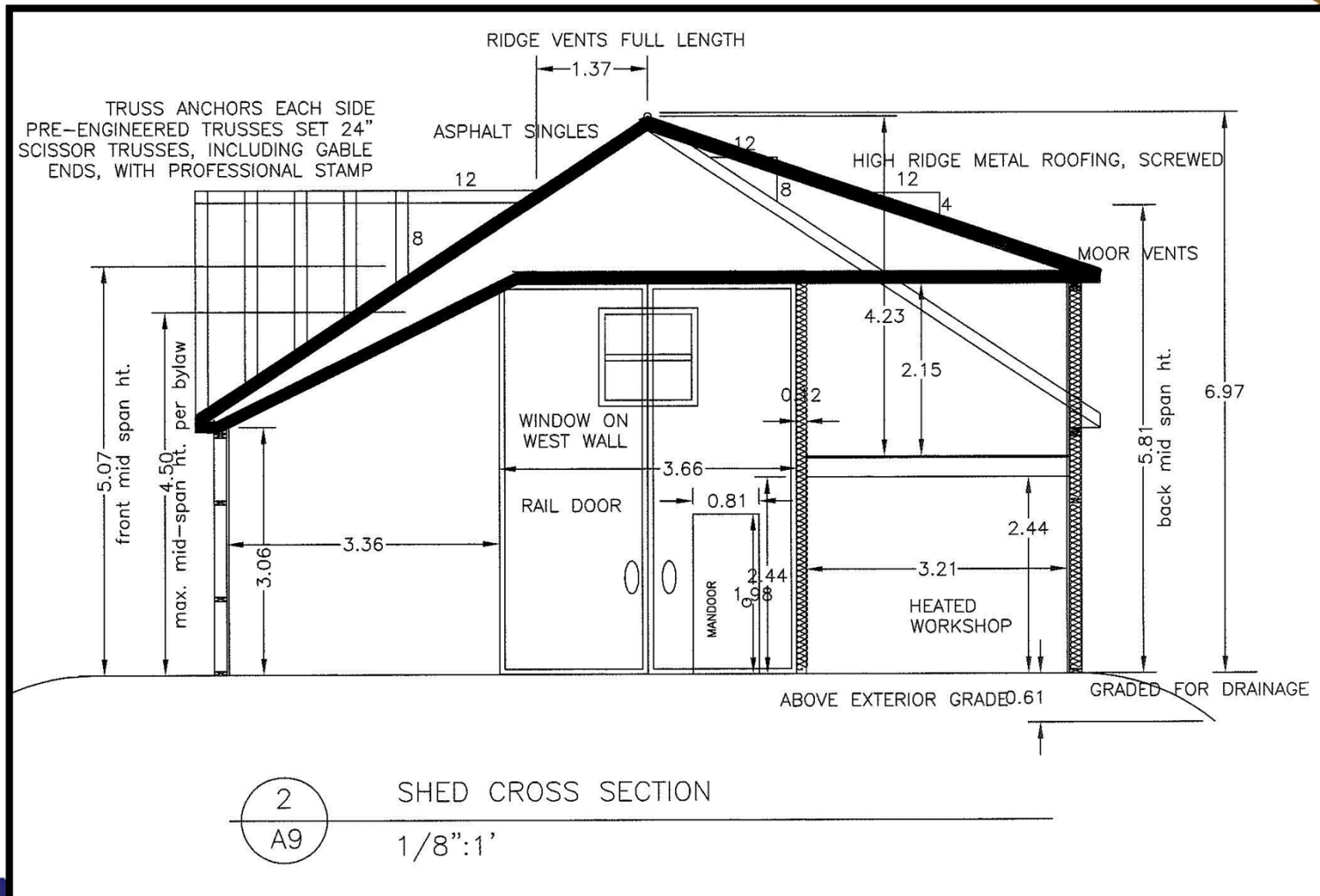


2017-A-07 (John and Annette Van Adrichem)



TAY TOWNSHIP

2017-A-07 (John and Annette Van Adrichem)



TAY TOWNSHIP

2017-A-07 (John and Annette Van Adrichem)



Driveway to subject lands





Proposed Garage Location



TAY TOWNSHIP

2017-A-07 (John and Annette Van Adrichem)



Proposed side yard setbacks



TAY TOWNSHIP



2017-A-07 (John and Annette Van Adrichem) Adjacent Accessory Buildings on McMulkin Lane





Adjacent Accessory Buildings on McMulkin Lane



TAY TOWNSHIP

2017-A-07 (John and Annette Van Adrichem)



Adjacent Dwellings on McMulkin Lane



TAY TOWNSHIP



2017-A-07 (John and Annette Van Adrichem)

Subdivision to the South

Georgian Bay

